



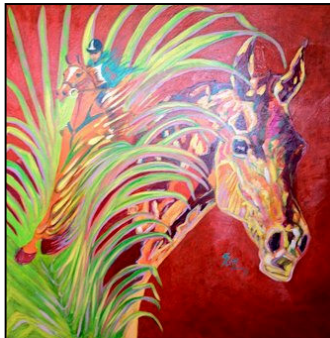
**USEF Network presented by Smartpak to Live Stream  
PRO DerbyCross in Wellington**  
*Canadian Eventer, Kelly Plitz, is Featured Artist for The Event*

For Immediate Release

**Wellington, FL - January 17, 2012** - The PRO DerbyCross Team Competition will be live streamed on the USEF Network presented by Smartpak on January 20 at 7 PM. Film production is being provided by CatchRide.

"We are very happy to team up with the [USEF Network presented by Smartpak](#), who will be hosting the live stream broadcast," said Samantha Lendl, Executive Director of the Professional Riders Organization. "DerbyCross is so much fun and we hope that this allows people all over the world to see what this extreme sport is all about."

Kelly Plitz, a member of the 1984 Canadian Three-Day Event Team, is the featured artist for PRO DerbyCross and has created a unique painting, which is acrylic on board. The painting will be auctioned off with all proceeds benefitting Operation Homefront Florida. Kelly is married to Canadian Eventer Ian Roberts and with their son Eventer Waylon Roberts operate Dreamcrest Equestrian near Port Perry, Ontario.



*Featured artwork by  
Canadian Eventer Kelly Plitz*

Hannah Sue Burnett, Land Rover U.S. Eventing Team Pan American Games Team Gold and Individual Silver Medalist, will open the evening with the National Anthem. Hannah is also Captain of Team Devoucoux, which added U.S. Show Jumping rider, Candice King, to the team line up this week.

2012 PRO DerbyCross Wellington Teams:

**TEAM SMARTPAK TEAM GUARDIAN HORSE BEDDING**

Captain Phillip Dutton, Eventing Captain Karen O'Connor, Eventing  
Boyd Martin, Eventing Clark Montgomery, Eventing  
Jennie Brannigan, Eventing Marilyn Little-Meredith, Eventing  
Jeffery Welles, Show Jumping Benjamin Meredith, Show Jumping  
Nic Roldan, Polo John Gobin, Polo

### **TEAM WINDSOR TEAM OMEGA ALPHA**

Captain Leslie Law, Eventing  
Captain Jessica Phoenix, Eventing  
Sinead Halpin, Eventing  
Rebecca Howard, Eventing  
Sharon White, Eventing  
Selena O'Hanlon, Eventing  
Scott Smith, Show Jumping  
Erynn Ballard, Show Jumping  
Luis Escobar, Polo  
Martin Estrada, Polo

### **TEAM DEVOUCOUX TEAM FARMVET/CAVALOR**

Captain Hannah Burnett, Eventing  
Captain Buck Davidson, Eventing  
Shannon Lilley, Eventing  
Bruce Davidson, Eventing  
Jon Holling, Eventing  
Will Faudree, Eventing  
Candice King, Show Jumping  
Aaron Vale, Show Jumping  
Doug Barnes, Polo  
Kris Kampsen, Polo

Proceeds from the PRO DerbyCross Team Competition benefit Operation Homefront, which is the Official Charitable Partner of the Professional Riders Organization. Operation Homefront provides emergency financial relief for U.S. Service Members and their families in times of need as well as Wounded Warriors during their recovery and transition. Equestrian Sport Productions and the FTI Consulting Winter Equestrian Festival will be hosting hot dogs and beer for 100 of our local U.S. Service Members and their families Friday, January 20 at 5:30 PM at the Suncast Pavilion adjacent to the International Arena at PBIEC.

General admission is free. For further information on hospitality packages please visit: [www.derbycross.com](http://www.derbycross.com).

**Media Contact:** Samantha Lendl  
772-633-6129  
[samantha@professionalriders.org](mailto:samantha@professionalriders.org)

### **About the FTI Consulting Winter Equestrian Festival**

The 2012 FTI Consulting Winter Equestrian Festival has 12 weeks of top competition running from January 11 through April 1. The FTI Consulting Winter Equestrian Festival is run by Equestrian Sport Productions, LLC and Wellington Equestrian Partners and held at the Palm Beach International Equestrian Center. All 12 shows are "AA" rated and Jumper Rated 6, and more than \$6 million in prize money will be awarded.

### **About FTI Consulting**

FTI Consulting, Inc. is a global business advisory firm dedicated to helping organizations protect and enhance enterprise value in an increasingly complex legal, regulatory and economic environment. With more than 3,800 employees located in 23 countries, FTI Consulting professionals work closely with clients to anticipate, illuminate and overcome complex business challenges in areas such as investigations, litigation, mergers and acquisitions, regulatory issues, reputation management, strategic communications and restructuring. The company generated \$1.4 billion in revenues during fiscal year 2010. More information can be found at [www.fticonsulting.com](http://www.fticonsulting.com).

Please visit [www.equestriansport.com](http://www.equestriansport.com) or call 561-793-5867 for more information.

**Jennifer Wood Media, Inc.**  
Jennifer Wood  
Equestrian Public Relations  
[info@jenniferwoodmedia.com](mailto:info@jenniferwoodmedia.com)

**Equestrian Sport Productions**  
Brooke Bidgood  
Public Relations and Marketing  
[brooke@equestriansport.com](mailto:brooke@equestriansport.com)

**Equestrian Sport Productions**  
[info@equestriansport.com](mailto:info@equestriansport.com)  
561.793.5867  
561.753.0394